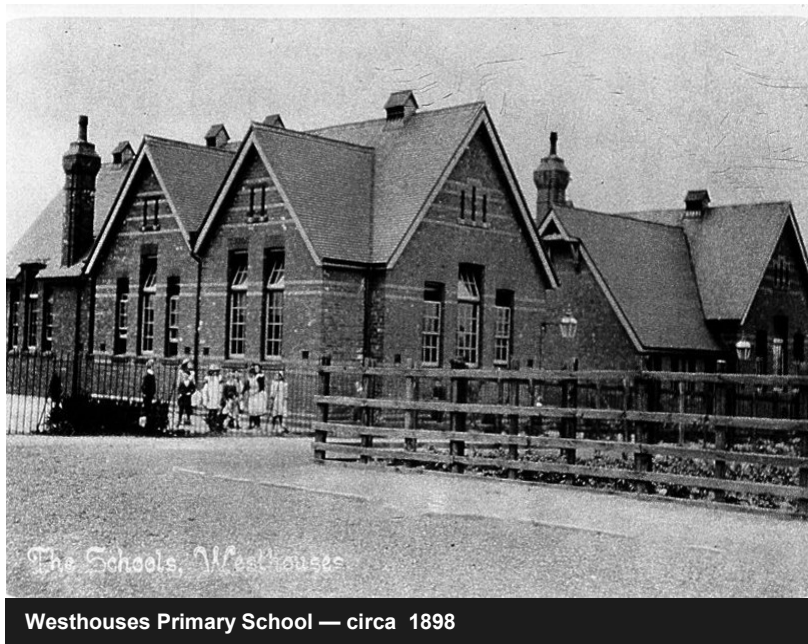


The background image shows a school playground. In the foreground, a black metal fence is partially covered with green and brown ivy. A young boy with glasses and a white shirt is smiling through the ivy. To his left, another child is partially visible. To his right, a girl with long brown hair is also smiling. In the background, there is a brick school building, a large tree, and a colorful play structure. A few other children are visible in the distance.

Westhouses Primary School School Prospectus

Welcoming, Hardworking, Positive, Supportive.



Welcome

Dear Parent/Guardian,

Thank you for expressing an interest in Westhouses Primary School for your child. I hope you find the information in our brochure helpful.

Westhouses is a small village school, we currently have around 70 pupils on roll, and are situated about two miles north of Alfreton, between Blackwell and Tibshelf.

The school is pleasantly situated well

away from main roads and is surrounded by fields, allotments and the village recreation ground.

The school building is over 110 years old but is spacious and very well maintained. The present accommodation consists of a hall, three classrooms, library area, office, staffroom and a school meals kitchen. There are two main playgrounds with an enclosed infant play area, two grassed areas and a multi-use games area. There is also a large recreation ground next to the school, which we use for those sports and games which require a larger space.

We have high expectations of both staff and pupils at Westhouses Primary and the school and in February 2019 we received a letter from the Secretary of State for Education to congratulate us for being in the top 1% of Primary schools for our achievement in writing. He thanked us for “producing such high standards through your hard work and professionalism.”

If you have not yet had a chance to visit the school, I hope you will accept this invitation to do so. You will find contact details at the end of this brochure.

Yours sincerely

Simon Taylor

Chair of Governors





Welcoming, Hardworking, Positive, Supportive

Values:

At the heart of our community

Family: A friendly atmosphere where everyone can feel confident and happy.

Inspiring: Encouraging a love of learning which challenges children to achieve.

Supportive: Listening to children as individuals whilst supporting their needs with care and respect.

Creative: Engaging children through a creative curriculum to become independent learners.

Inclusive: Everyone is valued in our school. No one is the same, but everyone is equal.



To achieve our vision and promote our values we will:

Provide a happy, secure, interesting and stimulating environment which encourages every child to grow and develop socially, emotionally and academically to the best of their ability.

Raise the individual child's knowledge, skills and practical abilities to the highest level, as well as helping those with special needs and difficulties, to enable them to cope with the needs of life at home, work and leisure in a rapidly changing society.

Help children:



- To develop lively, enquiring minds – to learn how to learn – how to acquire information and present it.
- To develop their ability to question, to put forward an argument, present their point of view rationally and to apply themselves to tasks.
- To become self-motivated, self-disciplined and tolerant persons with a high degree of self-respect who are capable of seeing the point of view of others.
- To develop a respect and understanding of other people's moral, religious beliefs and attitudes and to avoid discriminating against others.
- To develop children's co-operative and interpersonal skills by learning to share common objectives through working in groups.
- To appreciate human achievement in art, music, drama, science and technology, physical pursuits and literature.
- To give them the opportunity to experience these skills and to experience a sense of personal achievement in some of these areas.
- To become aware of their surroundings, the need for conservation and care of the environment.
- To encourage them to see themselves as an important part of the local community.
- To acquire an understanding of the social, economic and political order of the world and of the interdependence of individual groups and nations.





Our School

We are very proud of our school and our children and the progress they make and in the standards they set themselves. In our recent inspection Ofsted praised the children. “Pupils are proud to attend this warm and welcoming school. They were keen to tell inspectors that they are all part of the ‘Westhouses family’. As one pupil, typical of many, told inspectors, ‘Whenever I am here, I always feel safe’ (Ofsted September 2022)

The children enjoy working in an environment in which they are clear as to what is expected of them and where they are rewarded for their efforts.

‘The curriculum at Westhouses is ambitious and well organised. Leaders are clear about what pupils need to learn as they move through the school. Subject plans set out the knowledge and skills to be taught in small steps and in a logical order. Building pupils’ vocabulary is important at Westhouses. ‘Vocabulary Pyramids’ contain the words that are to be learned in each topic. Pupils talk about what they know in a precise way. In science, for example, older pupils shared their understanding of the cardiovascular system using words such as ‘circulation’, ‘transportation’ and ‘osmosis’.’ (Ofsted September 2022)

We want our children to develop a pride in themselves and play an important part in Westhouses Primary School and in the wider society.



Admissions

All admissions to Westhouses Primary School are now through the Local Authority's Admissions system. Admission Packs are distributed by the Local Authority in the autumn in the year before children start school. Children at present are admitted full-time into the Infant class at the beginning of September. To join our Nursery waiting list please phone school on 01773832518.

Admission Numbers

The set admission number for the number of pupils to be admitted to our reception year during the education year is 10.



Lessons begin at	8.50am	
Morning break	10.45 am. to	11.00 am.
Lunch	12 noon to	1.00 pm.
Afternoon break (for Explorers)	2.05 pm. to	2.15 pm.
School finishes	15.30pm	

The School Day

The hours spent on teaching during the normal school week, including R.E. but excluding the statutory daily act of collective worship, registration and breaks is 23 hours and 45 mins in class N. R and 1 and 24 hours and 35 mins in class 2 and 3.

Organisation

There are approximately 85 pupils on roll at present. Currently the school is divided up into four classes. Explorers ~ Our Nursery and Reception class, Pioneers~ our Year 1 to Year 2 class, Philosophers ~ our Year 3 to Year 4 class and Trailblazers~our Year 5 to Year 6 class.

Accessibility

We want Westhouses Primary school to be a school open to all. We have ramps to both main entrance doors and we also have a toilet for the disabled. If you or your child has special needs or a disability please contact us to discuss how we can best meet you and your child's needs.





School Meals

We are fortunate in having our own kitchen and the majority of children stay for school dinners. Meals are cooked on the premises by our cook, Ms Edwards, and are of a high standard based on menus prepared by the School Meals Service. At lunch times we have a “family service” where older children act as servers, two to each table, and help the younger children. We believe that our “family” lunchtimes teach the children good manners and help them socialise at mealtimes. All children are encouraged to eat at least a little of everything, but no one has to eat the foods they dislike. Water and/or squash are served with the meals. On occasion we will do themed lunchtimes such as a picnics where parents are welcome to join.

Free Meals up to KS1

Every child in reception, Year 1 and Year 2 in state-funded schools receives a free school lunch.

Free School Meals

Parents who feel that their children may qualify for free school meals should contact the school office for further details and the necessary forms. Or apply online through Derbyshire. <https://apps.derbyshire.gov.uk/applications/formBuilder/free-school-meals>

All applications will be treated with the strictest confidence. The school gets funding to support the learning of any child on free school meals so applying could be a real benefit.

A link is available on the school website under our pupil premium page. or click [here](#).

Packed Lunches

Most of the children have cooked lunches, however, if parents wish, children may bring a packed lunch to eat. Children who have a packed lunch eat at the same time as those having a school dinner. Children who bring 3 healthy items in their lunch box will be rewarded with 3 Dojo points.

Healthy School Status

Westhouses Primary School has achieved the National Healthy School Award.

Children are strongly discouraged from bringing sweets etc. to school. Infant children are given a piece of fruit every day. Older children, if they wish, may bring a healthy snack to eat at playtime. We ask all parents to ensure that children who bring a snack or a packed lunch to school only bring “healthy” food. We are also a gold status Food for Life school : click [here](#) for more information.



Standards of Behaviour

We expect the highest standards of behaviour at Westhouses Primary School. Our policy is available on our website or through the school office. Our behaviour system has been devised by our pupil voice group where they have outlined the behaviour we expect from pupils at our school. This means the children know what is expected of them. If children do misbehave and we consider sanctions are necessary then, depending on the circumstances, these are explained to the child and in more serious cases, parents will be contacted and, if unacceptable behaviour still persists, then exclusion will be used.

‘Pupils behave well. They know what bullying is and what to do if it ever occurred. Classrooms are calm places in which to learn. The playground is a friendly and active area for pupils to spend time. ‘Mini Leaders’ provide daily activities for the pupils to keep fit. ‘(Ofsted September 2022)

We recognise and reward success, effort and achievement. We operate a merit system whereby children may gain Dojo points for good work or behaviour. We also have Star of the Week awards, which recognise those individuals who make an “extra” contribution to the school. The “Golden Table” award recognises and rewards good manners and behaviour at lunchtime alongside Dojo point rewards for children who bring healthy lunches. We recently introduced a lanyard system for our older pupils in which they can gain reward badges. We also reward extra playtime for those with good attendance.

Curriculum

Through our curriculum, at Westhouses Primary School, we nurture every child, so they leave with a sense of pride, confidence, skills and knowledge needed to achieve success. Our curriculum provides opportunities for children to develop as independent, confident, caring, resilient and successful learners, with high aspirations, so they can make a positive contribution to their community and the wider society.

Our intention is that our curriculum opens children’s eyes to the world within and beyond their immediate environment. We explore connections between their own lives and the world of past, present and future. Trips and visitors enhance and build on our pupils’ ‘cultural capital’, offering experiences that many of our pupils wouldn’t otherwise have access to. We aim to widen pupils’ opportunities and inspire all of our children to gain the knowledge and skills they will need to achieve the future they aspire to.

Our curriculum is designed to provide the foundations of learning from the outset, in Nursery (Little Explorers), so that building blocks can be cemented and strengthened through deliberately repeating learning and making links to past and current learning across the curriculum. Our schemes of work and subject progression documents ensure that learning is appropriately sequenced, progression is secured and knowledge is retained.





Physical Education

We have an enviable reputation regarding sport and PE in the area. All our children are encouraged to take part in a wide variety of individual and team sports. Although we only have a small number of children compared with other schools in the area, we take part in many sporting activities both during and after school. A sensible balance between co-operation and competition is sought and a positive attitude towards keeping healthy. Swimming is taught at Alfreton Leisure Centre using qualified instructors and children in Years 3, Year 4 and some Year 5 have the opportunity to learn this important skill. We currently hold a gold award in the School Games scheme.



Forest Schools, Food for Life and Arts Mark

At Westhouses we recognise children learn in a number of ways. We are currently signed up to Forest Schools, an outdoor learning scheme where children are encouraged to work with others to carry out activities such as den/shelter building, role play, exploration, practical and creative skills and tasks. Food for Life, a agriculture scheme that teaches children about home growing, gardening and healthy eating. Arts Mark, an art scheme that encourages children to be involved in more art.

Religious Education

Westhouses Primary School is a community primary school with no affiliation to any religious body. We however have close links with the local churches who may come into school to take assembly and talk to the children.

We follow the new Derbyshire Agreed syllabus for RE which involves looking at aspects of all the major world faiths. As part of this study children may be taken to visit, churches, temples, mosques etc.

Personal and Social Health Education

This covers learning about ourselves and each other, how to live together without conflict, British values and how to stay fit and healthy. The children will also be taught Drugs Education and Relationship and sex education (RSE).

After-school Activities

Our staff and outside providers offer a variety of after-school clubs and activities during the year. We also use qualified coaches employed by outside agencies. All external coaches are checked to ensure they are safe to work with children. Children are expected to make a commitment to any club they join and participate in all the sessions. Clubs are announced at the beginning of each term for children to sign up to.



Homework

Children are expected to read each day at home. Children are also given spellings to learn each week.

We give out homework on a regular basis according to our homework policy which was drawn up after consultation with parents. The amount will vary according to the age and ability of the child. We hope that parents will be supportive and assist their children in any way they can.

Music Lessons

The school currently teaches an instrument to all Year 3, 4 and 5 pupils. Lessons take place in school and are given by a qualified music teacher. On occasion we put on music shows for parents to come and watch.

Safeguarding Children

Parents should be aware that the school will take all reasonable action to ensure the safety of its pupils. In cases where the school has reason to be concerned that a child may be subject to ill-treatment, neglect or other forms of abuse, staff have no alternative but to follow the County's Child Protection Procedures and inform Social Services of their concern. If you have any concerns regarding a child please bring it to the attention of school by speaking to our safeguarding leads, Juliette Whitby, Martin Weston and Kristy Russell. *Safeguarding is everyone's responsibility.*

Friends of Westhouses School

We have a support group of parents and people from the community who help support the school by volunteering, organising events and raising funds.

If you wish to join any help and support is always very welcome and meeting times will be posted on the newsletter. All our parents are very supportive but we understand you may not always be available to help and ask that you help when you can. Find out more about events [here](#).



Uniform

We are proud of our school and children are encouraged to take a pride in their appearance and become part of the shared identity of the school.

Children should wear:

- A black jumper/cardigan and a white shirt/polo;
- Black or dark grey shorts/trousers/skirt (not tracksuit bottoms or jeans)
- Sensible, dark shoes. (not trainers)
- We encourage children to use a red book bag that can be purchased on ParentPay for £6.25 as their school bag.
- Pupils may also wear red checked dresses in the summer.

Apart from simple stud ear rings children should not wear jewellery or make up for school.

Black jumpers, skirts etc. can be bought from a wide variety of local shops and supermarkets. There is also the option for parents to order uniform, with the school logo, directly through the School Trends or My Clothing online. Click [here](#) for a link to both via our school website.

PE Kit

PE is an important part of our curriculum. It is important that children come to school properly equipped to take part.

Children should wear:

- A plain white T-shirt
- Plain black shorts/leggings/jogging bottoms
- Black plimsolls for indoor and trainers for outdoor activities

For safety reasons jewellery should not be worn for PE (unless you have signed a permission slip for your child) and long hair should be tied back.

Children should be able to remove ear rings themselves or refrain from wearing them on days when they are scheduled to have PE. On P.E. days students are expected to come to school in their P.E. kit.

Please ensure that your child's clothes and property are clearly labelled





Special Educational Needs

Regular meetings are held with the Educational Psychologist to identify, assess and discuss the needs of our children and help prepare relevant programmes of work where necessary. Our Special Needs Co-ordinator keeps a list of children who may need help and will keep parents informed of progress made by the children. Please let us know if you would like to know more about the SEN policy and provision. Click [here](#) for a comprehensive outline of how the school supports children and families with SEND.

‘Leaders and governors have high expectations for all pupils, including those with special educational needs and/or disabilities (SEND). Teachers adapt the curriculum wherever they need to so that pupils with SEND are fully included in all parts of the curriculum. ‘(Ofsted September 2022)

Consultation

As your child’s parent, you are the most important influence in his/her life. It is most important that we work together as a team to help your child grow and mature. We hold consultation evenings twice a year for parents in the autumn and spring terms and a report is sent out towards the end of the school year. However if you are concerned about your child’s progress please see your child’s class teacher – anything that is of importance to you, is important to us.

Absences

Good attendance is a key element in your child making good progress at school. If your child is absent from school please notify us as soon as possible with the reason for the absence. A telephone message is acceptable.



Family Holidays in Term Time

Family holidays should be avoided if possible during term time. Government guidelines state that absence will not be authorised other than for exceptional circumstances. Please be aware that you could be liable to a fine if you take your child out of school and do not receive authorisation from the Head teacher. Leave of absence forms are available from the school office.

Click [here](#) for terms dates.



Accidents and Illness

If children are ill whilst they are at school; then we will contact you to collect your child. Please help us by keeping us up to date with emergency contact numbers including, where possible, those of a relative or neighbour who may be contacted when you are unavailable. If your child has any specific medical needs, e.g. asthma, please let us know.

If your child has a minor accident in school they will be given first aid by a member of staff and an accident report slip will be given to them to pass on to you so you can follow things up at home. If your child has a bump to the head school will phone or text you to make you aware as well as a bump slip sent home.

Administration of Medicine

It is not the school's policy to administer medicines to children. Many medicines can be prescribed so they do not need to be taken during school time. Please talk to your child's doctor about this. However we will always respond to individual needs, and a consent form must be completed.

Medical examinations

The school nurse usually visits the school to examine all children during their first year at school and throughout their time here. Parents are welcome to attend if they wish. The children may also be seen to have their hearing and eye sight tested or their teeth checked. Sometimes the doctor or school nurse may wish to check on a child's progress in later years.

Wrap Around Care

The school provides a breakfast club from 7.45am-9am. Afterschool provision runs from 3:30pm-5:30pm. If you are interested in this facility, please contact the office for more information and costings. Alternatively, click [here](#) to visit the school website for details.





Transfer to Secondary School

The procedures for transference to secondary school start in the September when the children reach Year Six.

Admissions to secondary school are managed centrally by the local authority. Parents are issued information packs and an application form, via school, in September. The completed form is returned to the Local Authority for processing.

Most of our children transfer to Tibshelf Secondary School. Tibshelf School is a very popular school with an excellent reputation. Staff from Tibshelf visit the school to meet the Y6 children and discuss with staff arrangements for transfer. Children also have the opportunity to visit Tibshelf School for a series of visits to sample the curriculum and to look round the school.

Your Views and Opinions

We regularly seek the views of parents and welcome your views and comments. We send out a regular questionnaire seeking parents' views and opinions, create Facebook polls and have a suggestion box located outside the school office. You are most welcome to pop into school to discuss anything that may worry, puzzle, upset or even please you!

Queries and Concerns

If you would like to discuss anything with the class teacher or Head teacher, they are usually available to talk to before or after school, however, if you might need longer than a few minutes please arrange an appointment, so that you receive quality time.

If you have a complaint which you feel cannot be dealt with through normal discussions then we do have a formal complaints procedure. A copy of the full complaints procedure can be obtained from the Head teacher or the Education Office.

Whistleblowing

If you think there are any irregularities -either managerial or financial- in the way in which the school is run then please contact as appropriate either the Head





Please visit our school website:

<http://www.westhouses.derbyshire.sch.uk>

Follow us on Facebook:

www.facebook.com/westhousesprimaryschool

To contact us:

Telephone 01773 832518

Or email: info@westhouses.derbyshire.sch.uk